



# Tribex™ ERD Additive and Direct Emulsion System (DE) Displace Diesel OBM for Major Global Operator in Permian Basin for Extended Lateral Section (ERD)

## Well Summary

Global operator drilling ERD oil wells in the Permian Basin successfully displaces Diesel OBM in lateral section with 50:50 brine diesel ratio (BDR) Direct Emulsion WBM and 3-6 ppb Tribex™ ERD Additive. High torque values were encountered with a WBM that exceeded the rigs torque limitations, Tribex™ ERD Additive was used to minimize reservoir friction factors. This reduction in friction was demonstrated through torque stabilization and reductions in both expected upweights and down weights. The addition of Tribex™ ERD Additive produced a WBM that performed on par with offset wells drilled using conventional DOBM. This resulted in a lower overall well cost to the operator and a reduced environmental foot print generally associated with the use of WBM.

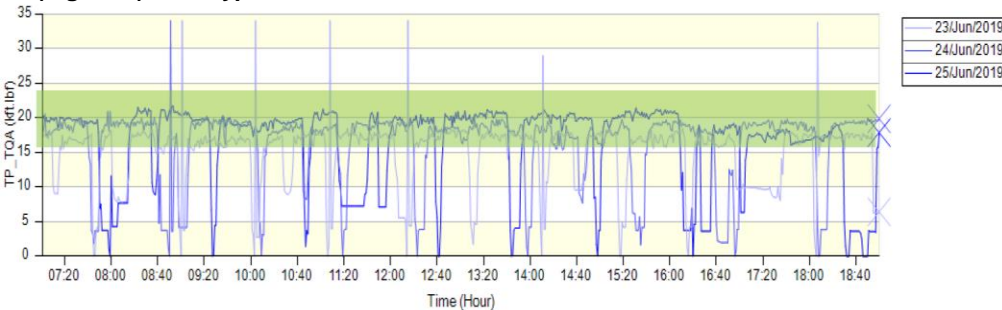
## Well Outline

Interval Length: +/- 15,500 ft. or 4724 m  
 Well MD: +/- 19,500 ft. or 5943 m  
 Well TVD: +/- 9,000 ft. or 2743 m  
 Hole Diameter: 8.5 inches

## Objective

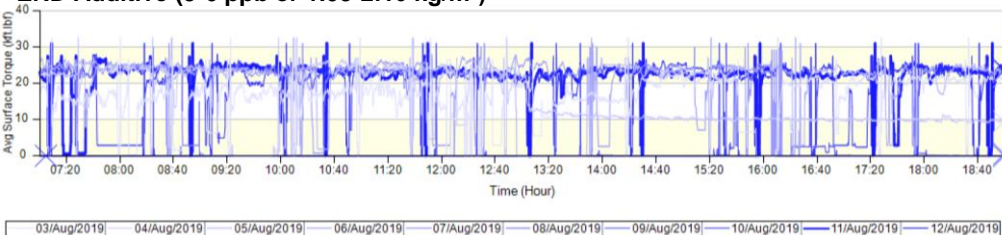
Well interval was successfully drilled to TD using Direct Emulsion WBM and 3-6 ppb or 1.05-2.10 kg/m<sup>3</sup> Tribex™ ERD Additive. Torque values were maintained at 22-25k ft-lb average as seen in Figure 2. Offset well torque values with Diesel OBM averaged 20-22k ft-lb as seen in Figure 1.

(Figure 1) Mud Type: Diesel Oil Based Mud



Maximum Torque: 32k ft-lb.  
 Limit Torque: 28k ft-lb.  
 Observed while drilling: 20-22k ft-lb. average

(Figure 2) Mud Type: 50/50 Direct Emulsion w/ Tribex ERD Additive (3-6 ppb or 1.05-2.10 kg/m<sup>3</sup>)



Maximum Torque: 32k ft-lb.  
 Limit Torque: 28k ft-lb.  
 Observed while drilling: 22-25k ft-lb. average

## CHALLENGES

- Displace Diesel OBM w/ DE WBM
- High torque values exceeding limitations of the drilling rig
- High Drag on Trips
- Large torque variation (tortuosity)
- Tool damage/failure rates

## SOLUTION

- 3-6 ppb or 1.05-2.10 kg/m<sup>3</sup> Tribex™ ERD Additive

## RESULTS

- ERD lateral drilled to TD w/ WBM successfully
- Torque variation (min-max) minimized

## MUD TYPE

- 50:50 BDR Direct Emulsion

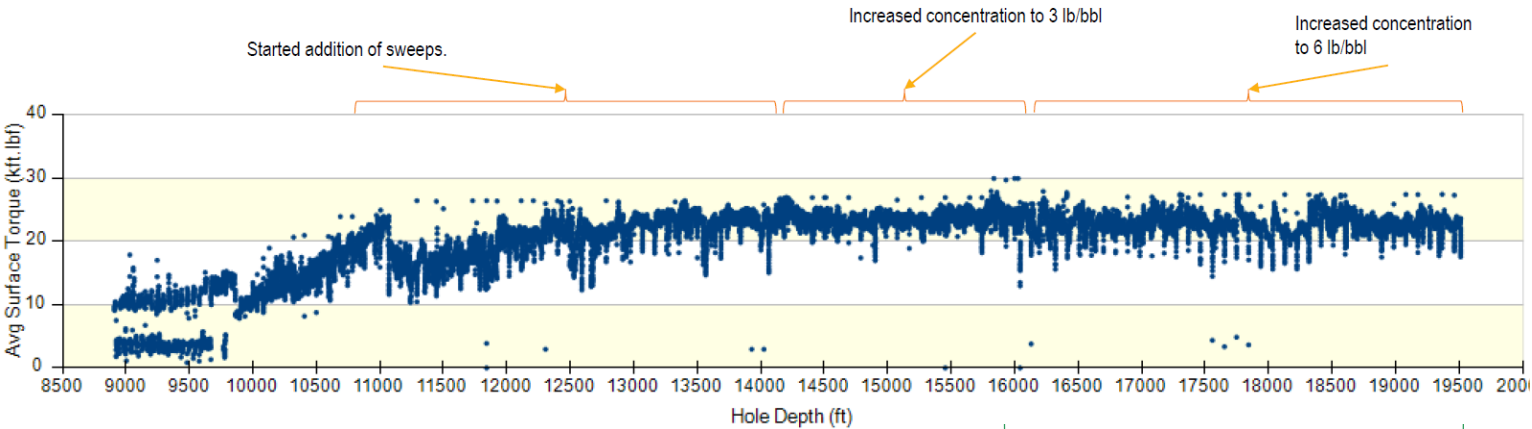




## Tribex™ ERD Additive Continued.....

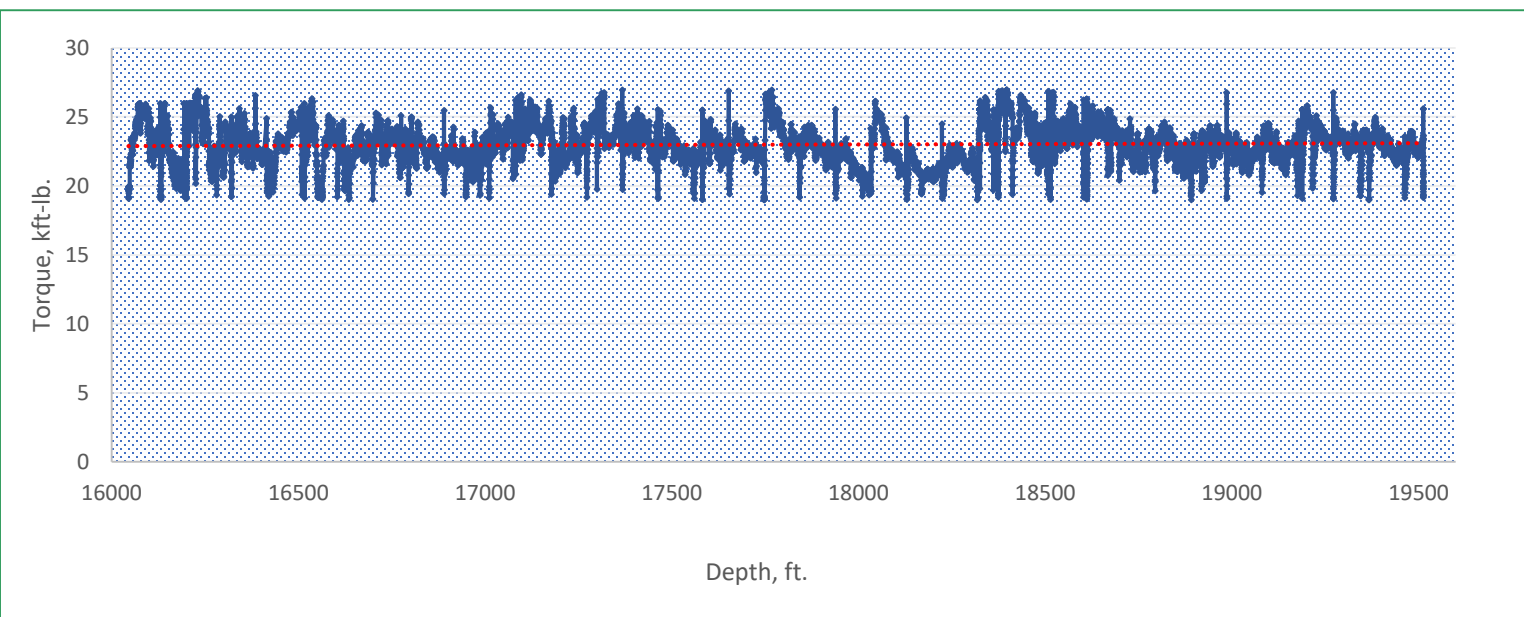
**Tribex ERD Additive:** Active System-Progressive Concentration

**Observation:** Torque stable and variations minimized



**Tribex™ ERD Additive:** 6 ppb or 2.10 kg/m<sup>3</sup> +/-16,000 ft – 19,500 ft. Interval TD (Fig. 3)

**Observation:** Torque values remain stable and tight through the end of the section with progressive concentrations of Tribex ERD Additive. As the Tribofilm is developed, friction factors are minimized contrary to the expected rise in overall torque values typically associated with ERD laterals.



**Fig. 3-** Torque analysis: 6 ppb. Tribex ERD Additive f/ +/- 16,000 ft. to +/- 19,500 ft.



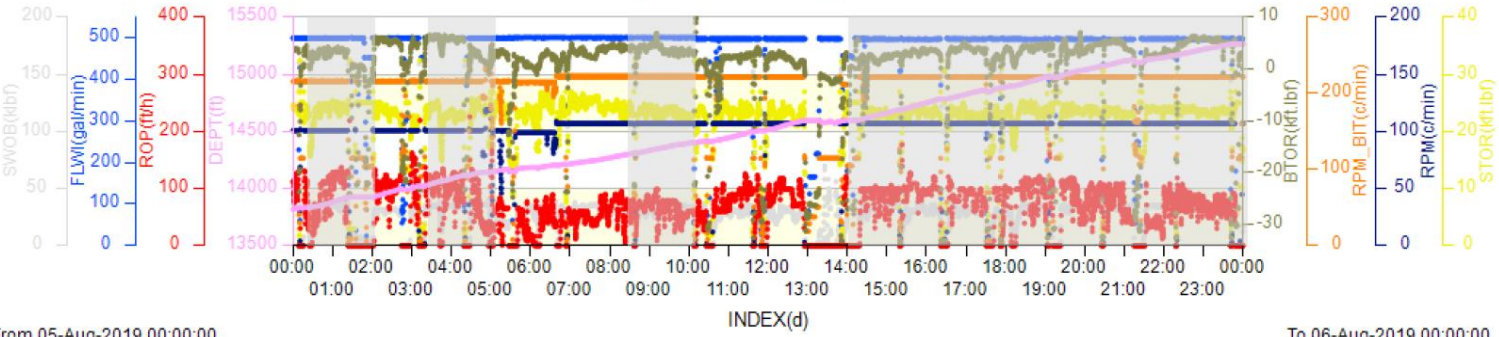
## Tribex™ ERD Additive Continued.....

### 3 ppb or 1.05 kg/m³ Tribex™ ERD Additive Added

**Observation:** Torque decrease and stable (Yellow)



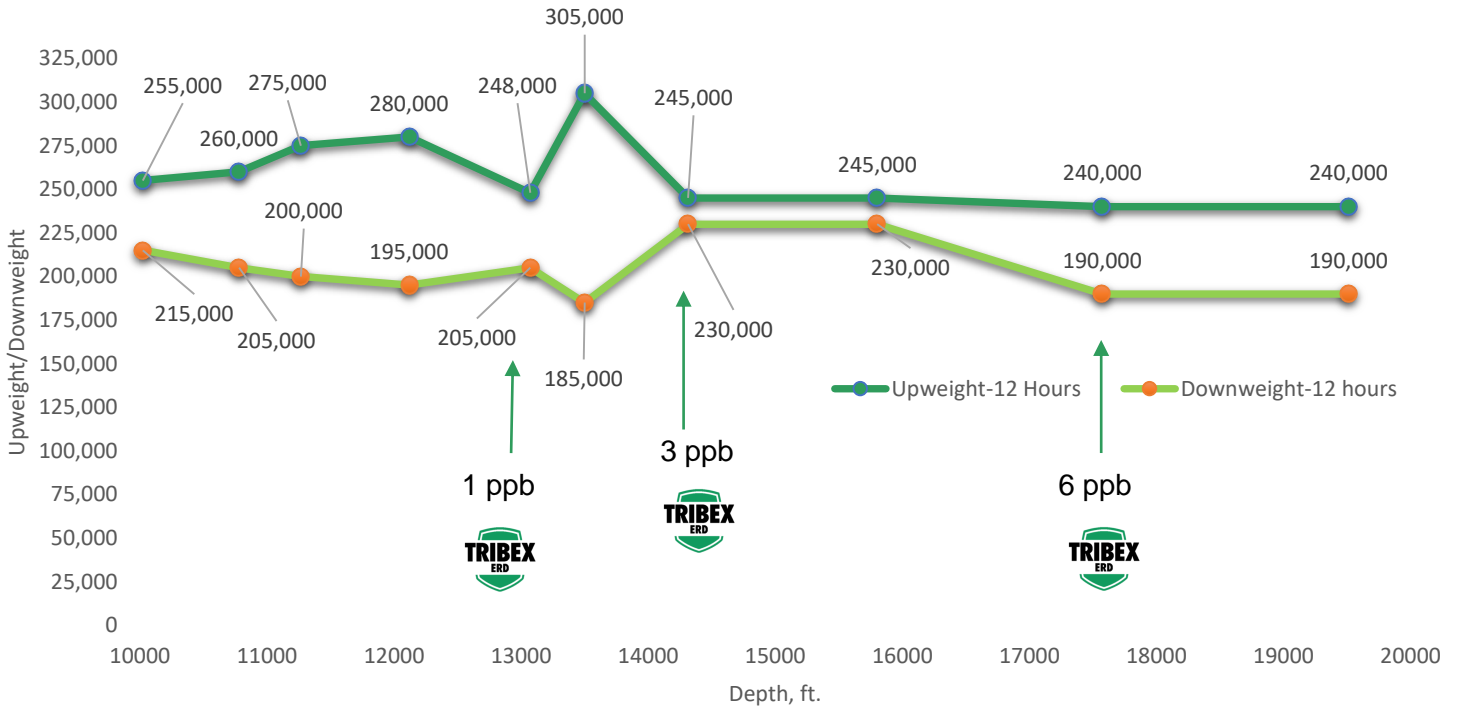
From 05-Aug-2019 00:00:00 to 06-Aug-2019 00:00:00



From 05-Aug-2019 00:00:00

To 06-Aug-2019 00:00:00

**Upweight and Downweight:** Upweight and Downweight measurements decreased as the section was drilled. Through increased concentrations of Tribex™ ERD Additive, these indirect measurements of sliding friction show the contributions of Tribex™ ERD Additive to reducing both static and dynamic friction forces.





Drilling Specialties Company's products are designed to help service companies deliver superior fluid performance, and assist operators by decreasing their critical exploration and development costs around the world. The fact is, the more technologically demanding the drilling or well production conditions, the more we can contribute to operational success.

Check us out on:



**DRILLING SPECIALTIES COMPANY | 3606 Research Forest Drive | The Woodlands, TX 77381 | (800) 423-3985**

This publication is for informational purposes only. It should not be used in place of the advice of a professional engineer. The user acknowledges that all technical information contained in this bulletin is given for convenience only and is accepted and used at the user's sole risk. Before using this product, the user is advised to make its own determination and assessment of the safety and suitability of the product for the specific use in question and is further advised against relying on the information contained herein as it may relate to any specific use or application. It is the user's ultimate responsibility to ensure that the product is suited and the information is applicable to the user's specific application. Drilling Specialties Company, a division of Chevron Phillips Chemical Company LP, does not make any warranties, and expressly disclaims all warranties, including warranties of merchantability or fitness for a particular purpose, regardless of whether oral or written, express or implied, or allegedly arising from any usage of trade or course of dealing in connection with the use of the information contained herein or the product itself. The user expressly assumes all risk and liability, whether based in contract, tort, or otherwise, in connection with the use of the information contained herein or the product itself.